



## TIKKUN OLAM

לתקן עולם במלכות שדי

*L'takein olam b'malchut Shaddai*  
Perfecting the World through  
Your Sovereignty

It has only been since the 1950's that the term, *tikkun olam* has implied acts of *tzedek*, or justice that will 'repair the world'! So when we pick up litter, or make sure someone has a place to *daven* (pray), or volunteer to work at a soup kitchen, today, we call these acts *tikkun olam*. But truly, the term is much broader than just these kinds of acts of justice. The concept of *tikkun olam* has ties to the theology found in the *Aleinu* prayer, it is connected to the physical wholeness of the world found in *midrashim* (Rabbinic stories), and it is related to our *halachic* or legal system, where it is used when the rabbis want to preserve the system and

protect the vulnerable party in a dispute. Finally the term, *tikkun olam* is used in *Kabbalah* (mystical tradition) as the process by which God's sparks — scattered at creation when they burst the vessels in which they were contained — are released and restored to their proper place through the performance of *mitzvot*, here not used in the sense of "good deeds," but by the meticulous and conscious observance of the commandments. Performing a *mitzvah* properly will allow for *tikkun*, the restoration of God's holy light, and the ultimate repair of the world. Like everything else in our lives, even the concept of "repairing the world" is nuanced.

BY RABBI CAROLYN BRAUN

We first see this term in the prayer that concludes all our services and was originally part of the Rosh Hashanah service, the *Aleinu*. There, the prayer asks that God will rid the world of all idolatry and will be acknowledged by all humanity as the One God, thereby "perfecting the world." In other words, while idolatry exists, the world needs repairing. And, therefore the prayer says, "...that You will perfect the world by your sovereignty so that all humanity will invoke Your name, and all the earth's wicked will return to You, repentant." The *Aleinu* suggests that the world will only be perfected or repaired when everyone acknowledges Adonai as God.

The sixth century *Midrash Rabbah* uses this term in a very different way. While discussing the creation story in Genesis, the author speaks of *tikkun olam* as a physical condition. He speaks of the division of the waters; making the upper waters into sky and the lower waters into ocean; as *tikkun shel olam*, making the world livable, or functioning. Unlike the use of the term *tikkun olam* in the *Aleinu*, where allegiance to God repairs the world, here it is something that God does to the world, in order to make it function properly.

*Halachic* (legal) writings use the term *tikkun ha-olam* rather than *tikkun olam*, or *tikkun shel olam*. Rabbi Adin Steinsaltz translates it as "the improvement of the world" because it is invoked as the reason for Rabbinic ordinances that make a legal process (such as divorce, or making or paying loans) easier for the more vulnerable party. Thus, "improving the world" is to lessen needless stress in legal interactions.

And finally, we come to *tikkun olam* as expressed by the 16th century Kabbalists. Developed from a *kabbalistic* telling of the Creation story, *tikkun olam* means bringing the world back to its original state: In order to make room for creation, according to *kabbalah*, God needed to become smaller. So God placed the Divine Self into the ten *sefirot* (10 spheres or aspects of God) which were then placed in vessels. But they could not contain the Divine Light, and they burst. So creation included pieces of the vessels and sparks of God's holy light. This also introduced evil into the world. The *kabbalah* teaches that had Adam not disobeyed God's command, Adam could have restored the light and repaired (*tikkun*) the world, but because he could not do it, *tikkun olam* fell to humanity and became our responsibility. Each time we perform a *mitzvah*, we release a spark and thus "repair the world."

So what does this all mean to us? I see *tikkun olam* as a combination of meanings. From the *Aleinu*, I understand *tikkun olam* as an appeal to bring spiritual repair to the world. When we can rid ourselves of the obstacles (idols) preventing us from seeing the Divine in all aspects of life, we will truly appreciate, respect and honor one another and our environment. Only when we recognize holiness in all humanity will we be able to change a too

see **Rabbi** page 11

### Shofar is now digital!

To receive the e-Shofar, please contact the TBE office at 774-2649 or [office@tbemaine.org](mailto:office@tbemaine.org) with your email address.

Limited printed copies will be available at TBE.

### Talkin' Torah: A Group Discussion over Lunch

Following our regular Shabbat morning services in the TBE Social Hall, at approximately 12:00 noon.

Three Saturday sessions remaining:

- March 31 – *Cinndi Davidson*
- May 12 – *Merril Abramson*
- June 9 – *Ivan and Sue Most*

# ANNIVERSARIES

## MARCH:

- 3 Adam Johnson and Isabelle Cohen Johnson
- 8 Jack and Deena Weinstein
- 17 Steve Gleit and Dana Robbins
- 17 Steve and Peggy Shapiro
- 20 Tom and Marjorie Berman
- 23 Larry and Lisa Plotkin
- 24 Stan and Doris Pollack
- 25 Mark and Shelley Chorney
- 25 Morton and Esther Gold
- 27 Joe and Becky DeLois
- 27 Fred and Ruth Miller

## APRIL:

- 4 Jeffrey and Tamara Schwartz
- 4 Peter and Barbara Shaw
- 13 William and Nancy Trough
- 19 Jack and Carol Simensky
- 24 Scott and Alise Koocher
- 25 Elliot and Linda Levine
- 28 Joe and June Rubin

## House Committee Thanks

### DAN GATCHELL, HOUSE COMMITTEE CHAIR

I would like to thank the House Committee (H/C) members and Temple Beth El staff for all their help and support for the Temple and H/C.

The H/C members participated in completing the following projects: replacement of the Sanctuary boiler circulation pump, Tom Berman continues his repair and support of our computer equipment the five remaining door sweeps were installed, repairs to door crash bar leading from lower foyer to Levey wing, and attempted to repair moisture leak in dairy freezer door again (ideas still in progress).

Obtaining estimates for the following: new electrical outlets for social hall, lower foyer, courtyard, and by traffic circle entrance, water spigot for courtyard, flooding alarm for boiler room, insulate condensation leaks in over head in lady's lounge, and repair ceiling tile boxes covering electrical wire conduits at each end of social hall.

I would also like to thank and welcome Fred Farber as a new member of the H/C.



# TEMPLE BETH EL

*"Our vision is to be an embracing, supportive and vibrant community which observes Judaism in the Conservative tradition and which is devoted to the perpetuation of Jewish values and culture. Temple Beth El honors the diversity of its members and is committed to their spiritual growth."*

## SCHEDULE OF SERVICES

Congregants are encouraged to make regular attendance at Temple Beth El a part of their lives.

### DAILY SERVICES

- Monday through Friday . . . . . 6:50 am
- Friday Evening Services . . . . . 5:30 pm
- Saturday and Jewish Holidays . . . . . 9:30 am
- Sunday . . . . . 9:00 am
- Secular Holidays . . . . . 8:30 am

*"Do not separate yourself from the congregation."*

—Hillel, Pirkei Avot, 2:5

- Rabbi . . . . . Carolyn Braun
- Director of Congregational Learning . . . . . Dov Goldberg
- Administrative Director . . . . . Jodi Veysey
- Administrative Assistants . . . . . Anne-Marie . . . . . Jeannine Poulin
- Communications . . . . . Deena Schoenfeld
- Bookkeeper . . . . . Sherri Quint
- Custodian . . . . . Bob Bradbury
- Rabbi Emeritus . . . . . Harry Z. Sky, D.D.
- Cantor Emeritus . . . . . Kurt Messerschmidt

### Officers

- President . . . . . Judy Gatchell
- Vice President . . . . . Joan Levy
- Treasurer . . . . . Jon Brier
- Secretary . . . . . Fae Silverman

### Executive Committee

- Officers: Jon Brier, Judy Gatchell, Joan Levy
- At large: Adam Arens, Irwin Gratz
- Ex officio: Rabbi Carolyn Braun, Jodi Veysey

### Temple Beth El Board of Directors

- Adam Arens Joy Krinsky
- David Brenerman Joan Levy
- Jon Brier Paul Muscat
- Becky DeLois Andrew Shur
- Barbara Dichter Fae Silverman
- Kate Foye Virginia
- Judy Gatchell Squires-Eklund
- Irwin Gratz

### Shofar

- Joy Krinsky, Production Editor



Temple Beth El is a member of the United Synagogue of Conservative Judaism.



Funding for Temple Beth El Religious School has been generously provided by the Jewish Community Alliance of Southern Maine, through its Annual Campaign.

# TBE'S ONLINE AUCTION – IT'S A WIN-WIN!!

*“When God created the first human beings, God led them around the Garden of Eden and said: ‘Look at my works! See how beautiful they are — how excellent! For your sake I created them all. See to it that you do not spoil and destroy My world; for if you do, there will be no one else to repair it.’” (Midrash Kohelet Rabbah, 1 on Ecclesiastes 7:13)*

With the theme of “sustainability,” Temple Beth El will open our online auction for bidding on Sunday, March 11 (at 8:00 am - if you want to get a jump start), through the website [www.biddingforgood.com/tbemaine](http://www.biddingforgood.com/tbemaine). You will have the opportunity to bid on a variety of fabulous trips, delicious dining experiences, beautiful artwork and Judaica, and useful household items and services.

Funds raised through this auction will support TBE's commitment to sustainability, as we work to ensure that our efforts are environmentally sensitive, economically sound and socially responsible. Through these initiatives, we not only strengthen the future of our community and planet but teach our youngest members valuable lessons about stewardship from a Jewish perspective.

BY JUDY GATCHELL  
PRESIDENT

The online format of our auction provides a unique way to reach not only our members but others in the community. Our auction is also open to bidders from around the country - including our Florida snowbirds! - expanding our reach beyond anything we could have imagined just a few short years ago.

To kick off the auction, TBE will hold a Sustainability Fair on Sunday, March 11 from 12:00 - 3:00 pm. The Sustainability Fair will offer amazing opportunities to see demonstrations, attend workshops, and learn about cost-effective and environmentally-friendly ‘green’ products and services available locally. All exhibitors will be donating materials or products to our auction. The Bidding for Good Online Auction will be running on a computer on-site so

that attendees will have the opportunity to register and place bids on your favorite items! Admission to the Sustainability Fair is free, and all are welcome!

For a preview of the auction and to register as a bidder, visit [www.biddingforgood.com/tbemaine](http://www.biddingforgood.com/tbemaine), then start watching your favorite items and get ready to bid beginning March 11 through March 25.

Thank you for your participation and support, which will benefit us all!

## WELCOME NEW MEMBERS

Jillian DiBiase

Douglas Chene & Jennifer Elowitch and children, Nathaniel, Jonah and Marni.

Kathleen Blake

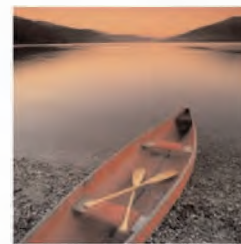
# TEMPLE BETH EL BiddingForGood ONLINE AUCTION

Opens for bidding on  
**Sunday, March 11, 2012**

**Final bids accepted through Sunday, March 25  
at 11:00 pm.**

**Register at [www.biddingforgood.com/tbemaine](http://www.biddingforgood.com/tbemaine)  
to bid on fabulous trips, delicious dining  
experiences, beautiful artwork and Judaica,  
useful household items and services, and more!**

**Auction proceeds support TBE's commitment to  
environmental, fiscal and social sustainability.**



## A LITTLE CHALLENGE

For two years now I have been privileged to serve on the faculty of the JCA sponsored Florence Melton Adult Mini-School. This is an extensive Jewish adult education program whose curriculum in Jewish literacy and learning has been offered across the United States and around the world for over 25 years. If you're interested in learning more about Melton you can speak with me or contact Fae Silverman at the JCA. But, the real reason I'm mentioning Melton is that since one of last week's classes there has been an issue occupying my mind and challenging me.

For those with a traditionalist view of God, *Torah* and Judaism one's religious commitment is relatively straightforward. The people of Israel were given the Torah which contains (among other things) a large number of *mitzvot* which they were commanded to follow. Furthermore, according to our tradition that Torah was in fact comprised of both a central written core (what we usually think of as the *Torah* or the *chumash*) as well as a wide-ranging set of accompanying oral teachings to facilitate understanding the intent, spirit and context of the written word as well as its application to developing real world situations. Ever since it has been the task of the sages of each generation to preserve, teach, apply, and promulgate this expansive and ever expanding Jewish tradition. While admittedly somewhat oversimplified, the traditionalist understands that the purpose of Torah and Judaism is to teach us fundamental truths of belief and behavior.

But what if our understanding of the Jewish tradition is a little (or a lot) less traditionalist? What if we're a little less sure of what exactly we mean by or believe about God, Torah, and Judaism? There are numerous eclectic answers which have been suggested by a wide variety of rabbis, theologians, and Jewish thinkers. But my question isn't really academic or theoretical. My question is really about what we think in our day to day lives and how

that affects our actual behavior.

For those of us (less than fully traditionalist Jews) who are proud to be Jewish and who feel a connection to Judaism we are delighted to learn about and share those great pieces of Jewish tradition, wisdom, and teaching that resonate so powerfully with us. We love and sometimes even boast about the great ancient insights and sen-

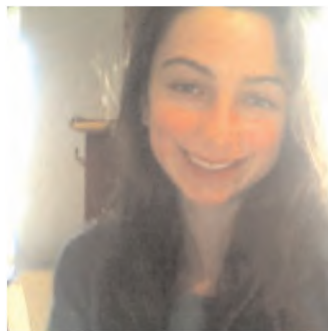
sitivity toward death and mourning that form the rituals and teachings that to this day help us through loss and grief toward some kind of acceptance and healing. But, what do we do when we are confronted with traditional teachings that seem to conflict with our contemporary sense of right and morality? What do we do when we are confronted each Rosh Hashanah with the incident in Genesis when Abraham is commanded to sacrifice his son Isaac? I'm not really asking about the fascinating literary discussions we engage in to try to understand this compelling piece of narrative. I'm talking about the fact that the tradition we love contains stories and commandments which make us uncomfortable. Hopefully we can find some comfort by the fact that the ancient sages also struggled with such elements of the tradition. Nevertheless, the knowledge that they too wrestled with these teachings doesn't eliminate our own discomfort.

The tendency for many of us is simply to dismiss those parts of the tradition that we find troubling or distasteful. I would suggest, though, that it's just a little too convenient to wholeheartedly embrace those parts of the tradition that speak to us while cavalierly ignoring those parts that we find uncomfortable. I would suggest that the Jewish tradition shouldn't be merely an anthology of quotations that we peruse to select those we like and skip over those we don't. I have no simple answers, but, if Judaism is something significant for us than we need to ask what claim the Jewish tradition has on us? In what way should

see *Dov* page 6

**BY DOV GOLDBERG  
DIRECTOR OF  
CONGREGATIONAL LEARNING**

## REBECCA GOODMAN



Please join Craig and Dorte Goodman on March 2 and 3, 2012, as they celebrate the Bat Mitzvah of their daughter, Rebecca.

Rebecca Goodman is an 8th grader in the International Section at the Esplanade Junior High School in Strasbourg, France. The family on her father's side is American, and Danish on her mother's side. Both Rebecca and her little sister, Esther, speak French, English and Danish. Rebecca spent many joyful moments with family and her grandparents in Portland up until 2007.

Rebecca loves reading and may want to write books herself. She also plays the violin and loves music.

We especially thank Rabbi Braun, Dov Goldberg and Temple Beth El for this opportunity to reunite the family in a place where we can all join together, and which has meant so much for us.

## ABIGAIL ELOWITCH



Please join Faith and Jim Elowitch on April 27-28, 2012, as they celebrate the Bat Mitzvah of their daughter, Abigail.

Abigail is a seventh grade student at Lyman Moore Middle School where she plays soccer, basketball and track. She also plays soccer for PAYSA and MCU Portland Phoenix and softball for Portland North. Abby is a straight A student and volunteers her time in the Functional Life Skills room. She is also learning American Sign Language during her time in the FLS room.

## ADULT ED COURSES

Please contact the TBE office at 774-2649 or office@tbemaine.org to sign up for these free classes:

**Jewish Literacy on One Foot** with Rabbi Carolyn Braun. Sundays, March 11, 18, April 1, 29, May 6, and 20, from 9:45 am to 10:45 am at Temple Beth El.

A very brief exploration of Judaism based on Rabbi Joseph Telushkin's book, *Jewish Literacy*.

**Shaking off Jewish Identity: Assimilation Then and Now** with Professor Sanford Freedman. Sundays, March 11, 18, April 1, 29, May 6, and 20, from 11:00 am to 12:00 noon at Temple Beth El.

If we teach ourselves by means of histories, memoirs, and fictions how our ancestors disguised their Jewish markings, can we then, with any facility, place our own moment to disappear willfully under scrutiny?

This course primarily attempts to image how certain central and eastern European Jews from 1780 to 1930 adjusted and altered their inherited image of being Jews. The class first reads two primary texts, one, a family memoir entitled *The Hare with Amber Eyes*, and second, a biography of the American Ambassador to Germany and his daughter, *In the Garden of the Beast*. Then a selection of chapters that also address the topic of Jewish cultural assimilation is drawn from *The Jews of Odessa*, *The Jews of Kiev*, *Fin de Siecle*, *Philosophy without God*, and *Mendelssohn on the Roof*.

## MAZEL TOV

To Simon Handelman and his family on the occasion of Simon's Bar Mitzvah.

To Sam Segal and his family on the occasion of Sam's Bar Mitzvah.

To the Timmins family on the baby naming for their daughter Aviva on Saturday, December 17.

To the Lerman family on the birth of Caleb Benjamin Lerman, born Sunday, December 11 to Justin & Samantha Lerman. Caleb will be joining his big brother Grady Elijah at home. Proud grandparents are Karen & Alan Lerman and great-grandfather is Abraham Benjamin.

## TODAH RABAH

To Dan & Judy Gatchell for sponsoring a special kiddush lunch on Saturday, December 3, in honor of Dan's 65th birthday!

To Jonathan and Ellen Handelman for sponsoring the oneg on Friday evening, December 9, in honor their son Simon's Bar Mitzvah.

To Rose Novick and Sam & Bette Novick for sponsoring the oneg on Friday evening, December 9, in memory of Rose's husband and Sam's father, Jack Novick.

To Madeleine Segal, Rubin Segal and the many volunteers for sponsoring the Friday evening, December 16 oneg and Saturday, December 17 luncheon in honor of Sam's Bar Mitzvah.

To Talia and Joel Timmins for sponsoring in part the Saturday, December 17 luncheon in honor of the naming of their new daughter, Aviva.

To Robert Aranson for sponsoring the Kiddush on Saturday, December 31, in honor of the anniversary of his Bar Mitzvah.

To Benjamin, Jeri, and Baxter Brem for sponsoring the oneg on Friday, January 6, in memory of Jeri's father and mother, George & Adeline Baer Fleischer.

To **Carla Marcus** for her time, effort and care in putting together the Morning Minyan booklet.

*The TBE & Levey Day School Chanukah Party and the Fountainheads Concert were a huge success, thanks to the energy, dedication, hard work and generosity of our many volunteers, our sponsors, and our host families.*

We are grateful to the following people, for making these incredible community events possible:

To our **Chanukah Celebration** volunteers, who planned, purchased groceries and supplies, peeled, grated, mixed and fried the potato latkes, set up and decorated the Social Hall, prepared scrumptious soups and salads, baked delicious desserts and helped clean up: Paul Muscat, Danielle Sanokklis, Tom Berman, Danielle Romanoff Goldberg, Clara Purinton, Joan Levy, Hedy Cohen, Judy Gatchell, Isabel Cohen Johnson, Laura Piltch, Margaret Hathaway, Karl Schatz, Irwin Gratz, Norm Wilson, Shirley and Murray Rosen, Talia Timmins, and Levey Day School and TBE Hebrew School teachers and students.

To our **Fountainheads** volunteers: Tom Berman, Jeannine Poulin, Sherri Quint, Bob Bradbury, Craig LaPine, Judy Wilson, Ruthanne Singal, Terry Veysey, Norm Wilson.

To our **Fountainheads** sponsors: Karen and Alan Lerman  
Bette and Sam Novick & Family

Pat Reef

Elizabeth and Tom Rosen & Family  
Judy and Norm Wilson

To our **Fountainheads** host families:

Eric Dinnerstein and Pam Bokat  
Orly and Natan Kahn  
Elizabeth and Tom Rosen  
Dov and Danielle Goldberg  
Deena and Josh Schoenfeld

## CONDOLENCES

To Fae Silverman, whose brother, **Marc Goldsmith**, passed away in San Francisco, on December 28.

To Helen and Susan Iesenman on the passing of Helen's brother and Susan's uncle, **Maurice Levin**, on December 18 in Massachusetts.

To the family of **Jerry Fine**, who passed away at the Gosnell House in Scarborough on January 10. He will be sadly missed by his loving wife and constant companion of 40 years, Susan Fine. Jerry also leaves a sister and two nieces from outside the area, as well as his brother-in-law and sister-in-law Mark and Shelley Chorney, a niece Jessica Chorney and nephew Brian Chorney and their soon to be significant others. Jerry also had many very thoughtful and close cousins and friends who will miss him dearly.

To the family of **Ina Weissman**, who passed away in Florida on Thursday, February 2, 2012. She was the beloved wife of the late Myer Weissman; loving mother of Ruth Yates and Alan (Lori) Weissman; devoted grandmother of Joseph (Christine), Emily, and Billy Weissman; fond great-grandmother of Taylor, Michaela, Jaxson, and Cole; dear aunt of many nieces and nephews. She is predeceased by her brothers, Joseph and Bernard Schatz.

To the family of **Phyllis Slater Klein**, who passed away in Florida on Sunday, February 5, 2012. She was the beloved wife of the late Jonas B. Klein. Phyllis, an active member of Hadassah, National Council of Jewish Women and Temple Beth El Sisterhood, will be sadly missed by her children Bonnie and James Klein, of Cumberland Foreside, Maine, Jeanne (Klein) and Daniel Kleinman of Farmington, Connecticut, and her grandchildren Karen and Joshua Klein, Susannah Levine and Dr. Jesse Klein, Kendra and Jordan Klein, Kirsten and Jonathan Kleinman, and Rachel and James Adams. In addition, she is survived by great grandchildren: Jake Klein, Jonas Klein, Eva Rose and Jack Adams, and Joseph and Dean Kleinman. She also leaves a brother and sister-in-law, Dr. Eliot and Miriam Slater, of Boca Raton Florida. She was also a loving aunt to many nieces and nephews.

## Kol Yeladim

It's been a busy start to 2012 for the Kol Yeladim group and our events will continue throughout the year. Our Jewish themed activities are geared towards the 0-5 age group and designed to foster a sense of community and friendship within the greater Portland Jewish community. Families with young children are invited and encouraged to join us for monthly programs to learn about our Jewish traditions and play with friends. For more information, please contact Talia Timmins at [kolyeladim@tbemaine.org](mailto:kolyeladim@tbemaine.org) or 233-6449.

## USY Update

BY KATE FOYE

It has been a great year so far for USY. Over winter break, we had a fun evening and enjoyed popcorn, candy and a movie. More recently the USY'ers were "kidnapped" and taken to a secret location. Everyone had a BLAST at the Bounce Zone in Saco! We played and then hung out together and ate lots of pizza! In March, USY President Arianna Solodar-Wincele, will be organizing a scavenger hunt at the Maine Mall with a fantastic prize for the winning team! USY will also helping out with the TBE Ice Cream and Soda Pop Social, on Sunday, April 1 from 12:00 - 1:00 pm, benefitting TBE's Annual Appeal. Looking forward to the fun we will have this spring!!!!

We cordially invite you to

### PURIM FESTIVITIES

at Temple Beth El  
on

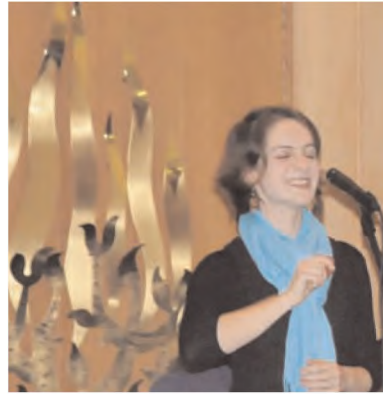
**Wednesday, March 7**

3:30 pm  
Hebrew School  
**PURIMPALOOZA**

5:30 pm  
**PURIM DINNER**

6:30 pm  
**MEGILLAH READING**  
in Ancient Shushan

## TBE & Levey Chanukah Party and Ein Prat Fountainheads Concert



### Dov continued from page 3

we feel beholden to Jewish teachings and heritage? How do we accept and privilege a Jewish tradition that contains both teachings that we find so elevating and those that make us want to turn away?

Maybe most of us can't be bothered with these questions. Maybe we don't have the time, energy, or interest to think about them. But, I would suggest that if our ancient tradition isn't valuable enough to struggle with, as have both simple Jews and sages for over two millennia, then Judaism won't be important enough to be around for another two.

As Passover approaches and we prepare for the *seder* maybe this is some-

thing worth thinking about. Our tradition teaches that God brought us out of Egypt not simply to be free for its own sake, but, in order to bring us to Sinai and give us the Torah. So, as you observe the ancient and beloved tradition of sitting at a seder I'd like to challenge you to reflect on the really big question of why. Why does the Jewish tradition mean anything to you? What role does Judaism play in your life and how are you a part of the Jewish heritage? Why is Judaism significant enough to preserve and be a part of our lives? And how do we seriously confront the fullness of the Jewish tradition and allow all of it to shape who we are as Jews and human beings? Just a little challenge.

Wishing you all a sweet and meaningful Pesach!



TEMPLE BETH EL

C A L E N D A R

MARCH - APRIL 2012

ADAR - IYAR 5772

**MARCH**

**Friday, March 2**

5:14 pm Shabbat candle lighting time  
5:30 pm Kabbalat Shabbat services & Bat Mitzvah of Rebecca Goodman

**Saturday, March 3**

9:30 am Shabbat services & Bat Mitzvah of Rebecca Goodman  
6:23 pm Havdalah time

**Sunday, March 4**

9:00 am Morning Minyan  
Hebrew School  
9:45 am Schmooze & Shmear  
Adult Ed Class with Prof. Danielle Freedman: *Polish Poetry from the Shoah*  
11:00 am Adult Ed Class with Rabbi Braun: *The Rest is Commentary*

**Monday, March 5**

12:00 noon JCA Purim Senior Luncheon @ TBE

**Wednesday, March 7**

3:30 - 5:30 pm *Tor'anic Esther - Fast of Esther*  
**Hebrew School Purimpalooza** & Megillah Reading (*abbreviated*)  
5:30 - 6:30 pm TBE Purim Dinner  
6:30 pm Megillah Reading

**Thursday, March 8**

6:50 am *Purim*  
Morning Minyan

**Friday, March 9**

5:23 pm *Shushan Purim*  
Shabbat candle lighting time  
5:30 pm Kabbalat Shabbat services

**Saturday, March 10**

9:30 am Shabbat services  
6:32 pm Havdalah time

**Sunday, March 11**

**Daylight Savings Time begins**  
**Bidding For Good Online Auction OPENS ( - bid through Sunday 3/25)**  
9:00 am Morning Minyan  
Hebrew School  
9:45 am Schmooze & Shmear  
Adult Ed Class with Rabbi Braun: *Jewish Literacy on One Foot*  
11:00 am Adult Ed Class with Prof. Sanford Freedman: *Shaking Off Jewish Identity: Assimilation Then & Now*  
12:00 noon **TBE Sustainability Fair**

**Tuesday, March 13**

7:00 pm TBE Executive Committee Meeting

**Wednesday, March 14**

3:30 pm Hebrew School  
6:30 pm Melton Classes

**Friday, March 16**

5:30 pm Kabbalat Shabbat services  
6:32 pm Shabbat candle lighting time

**Saturday, March 17**

9:30 am Shabbat services  
7:41 pm Havdalah time

**Sunday, March 18**

**Bidding For Good Online Auction continues through Sunday 3/25**  
9:00 am Morning Minyan  
Hebrew School  
9:45 am Schmooze & Shmear  
Adult Ed Class with Rabbi Braun: *Jewish Literacy on One Foot*  
11:00 am Adult Ed Class with Prof. Sanford Freedman: *Shaking Off Jewish Identity: Assimilation Then & Now*

**Wednesday, March 21**

3:30 pm Hebrew School  
6:30 pm Melton Classes

**Friday, March 23**

5:30 pm Kabbalat Shabbat services  
6:40 pm Shabbat candle lighting time

**Saturday, March 24**

9:00 am **Rosh Chodesh Nisan**  
Hebrew School Shabbat Experience  
9:30 am Shabbat Services  
7:49 pm Havdalah time

**Sunday, March 25**

9:00 am **NO HEBREW SCHOOL**  
Morning Minyan

**Tuesday, March 27**

5:30 pm TBE Board Meeting

**Wednesday, March 28**

3:30 pm Hebrew School  
6:30 pm Melton Classes

**Friday, March 30**

5:30 pm Kabbalat Shabbat services  
6:49 pm Shabbat candle lighting time

**Saturday, March 31**

9:30 am **Shabbat Hagadol**  
Shabbat Services  
12:00 noon Talkin' Torah Lunch & Learn  
7:58 pm Havdalah time

*Dates and times are subject to change. Please see our website and announcements for the most current information.*

TEMPLE BETH EL, 400 Deering Avenue, Portland, ME  
(207) 774-2649 [www.tbemaine.org](http://www.tbemaine.org)

*continued* ➡

# APRIL

<p><b>Sunday, April 1</b></p> <p>9:00 am Morning Minyan Hebrew School Schmooze &amp; Shmear</p> <p>9:45 am Adult Ed Class with Rabbi Braun: <i>Jewish Literacy on One Foot</i></p> <p>11:00 am Adult Ed Class with Prof. Sanford Freedman: <i>Shaking Off Jewish Identity: Assimilation Then &amp; Now</i></p> <p>12:00 noon <b>TBE Ice Cream &amp; Soda Pop Social</b></p>	<p><b>Saturday, April 21</b></p> <p>9:30 am Shabbat Services</p> <p>8:23 pm Havdalah time</p>
<p><b>Wednesday, April 4</b></p> <p>3:30 pm Hebrew School</p> <p>6:30 pm Melton Classes</p>	<p><b>Sunday, April 22</b></p> <p>9:00 am <b>NO HEBREW SCHOOL (Spring Break)</b> <i>Rosh Chodesh Iyar</i> Morning Minyan</p> <p>5:30 pm TBE Board Meeting</p>
<p><b>Friday, April 6</b></p> <p>6:50 am <b>Ta'anit Bechorot - Fast of the Firstborn</b> <b>Erev Pesach (Passover)</b> <b>First Seder</b> Morning Minyan with a special teaching followed by a breakfast <i>Siyum</i> with Rabbi Braun Shabbat &amp; Holiday services Shabbat &amp; Holiday candle lighting</p>	<p><b>Tuesday, April 24</b></p> <p>TBE Board Meeting</p>
<p><b>Saturday, April 7</b></p> <p>9:30 am <b>Pesach (Passover) - Second Seder</b> Shabbat &amp; Holiday services Holiday candle lighting time</p> <p><b>Sunday, April 8</b></p> <p>9:30 am <b>Second Day of Pesach (Passover)</b> <b>Omer 1</b></p> <p>8:07 pm <b>NO HEBREW SCHOOL</b> Holiday services Havdalah</p>	<p><b>Wednesday, April 25</b></p> <p>3:30 pm <b>Yom Hazikaron - Israel Memorial Day</b> Hebrew School &amp; Orchid Ensemble Orchid Ensemble Performance</p> <p><b>Thursday, April 26</b></p> <p>6:50 am <b>Yom Ha'atzmaut - Israel Independence Day</b> Morning Minyan</p>
<p><b>Wednesday, April 11</b></p> <p>3:30 pm <b>Chol Hamoed Pesach - Omer 4</b> Hebrew School Melton Adult Ed School</p> <p><b>Thursday, April 12</b></p> <p>7:05 pm <b>Chol Hamoed Pesach - Omer 5</b> Holiday candle lighting time</p> <p><b>Friday, April 13</b></p> <p>9:30 am <b>7<sup>th</sup> day of Pesach - Omer 6</b> <b>TBE OFFICE CLOSED</b> Holiday Services Shabbat &amp; Holiday services Shabbat &amp; Holiday candle lighting time</p>	<p><b>Friday, April 27</b></p> <p>6:50 am Morning Minyan Kabbalat Shabbat Services &amp; Bat Mitzvah of Abigail Elowitch Shabbat candle lighting time</p> <p><b>Saturday, April 28</b></p> <p>9:30 am Shabbat Services &amp; Bat Mitzvah of Abigail Elowitch Havdalah time</p> <p><b>Sunday, April 29</b></p> <p>9:00 am Morning Minyan Hebrew School Schmooze &amp; Shmear Adult Ed Class with Rabbi Braun: <i>Jewish Literacy on One Foot</i> Adult Ed Class with Prof. Sanford Freedman: <i>Shaking Off Jewish Identity: Assimilation Then &amp; Now</i> <b>Community Yom Ha'atzmaut Celebration &amp; Maccabeats Concert at Congregation Bet Ha'am</b></p>
<p><b>Saturday, April 14</b></p> <p>9:30 am <b>8<sup>th</sup> day of Pesach - Omer 7</b> Shabbat &amp; Holiday services</p> <p>11:15 am (approx.) <b>Yizkor</b> Havdalah time</p> <p><b>Sunday, April 15</b></p> <p>9:00 am <b>NO HEBREW SCHOOL (Spring Break)</b> Morning Minyan</p> <p><b>Wednesday, April 18</b></p> <p>6:50 am <b>NO HEBREW SCHOOL (Spring Break)</b> Morning Minyan</p>	<p><b>Friday, April 20</b></p> <p>5:30 pm Kabbalat Shabbat service</p> <p>7:14 pm Shabbat candle lighting time</p>



**חג פסח**

Wishing you a  
**Joyous**  
**Passover!**



# ANNUAL APPEAL DONORS *as of January 19, 2012*

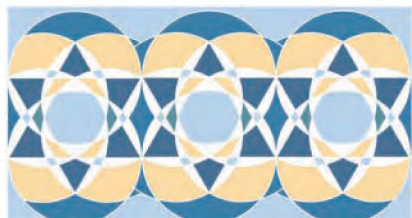
David and Lynn Abramson  
Allan and Susan Abravanel  
Justin and Rachael Alfond  
Adam and Lisa Arens  
Frederick and Jennifer Aronson  
Richard and Adele Aronson  
Joan and Jeffrey Barkin  
Deborah and John Barlock  
Rena and Michael Becker  
Barbara Berenson  
Myron and Ilene Berman  
Benjamin and Judy Bertram  
Dauna Binder  
Stephen and Francine Blattner  
Ronald and Gaye Blumenthal  
Harriet Bogdonoff  
Joseph and Debbie Bornstein  
Rabbi Carolyn Braun  
David and Nancy Brenerman  
Sharon Bresler  
Peter and Gerri Bridgman  
Jonathan and Amy Brier  
Gerald and Mary Carp  
Stanley and Emily Chaleff  
Esther Chorney  
Mark and Shelley Chorney  
Michael Clenott  
Brona Cohen  
Michael and Hedy Cohen  
Gene R Cohen Charitable Foundation  
Walter Webber and Leiba Cohen Webber  
Nathan and Anna Collins  
Janine Collins  
Mark Crasnick

Joseph and Rebecca DeLois  
Gilbert and Barbara Dichter  
Mildred Drees  
Gerri Eastment  
Wayne Eklund and Ginny Squires-Eklund  
Charlotte Farber  
Fredric and Karen Farber  
Mark and Norma Filler  
Frederick Finberg  
Eve-Karen Finkelstein  
Martin and Patricia Finkelstein  
Colin and Katherine Foye  
Rabbi David Freidenreich and Sara Kahn-Troster  
Franziska Fritzsche-Jensen  
Gregg and Patricia Garson  
Dan and Judy Gatchell  
Stuart and Carol Gilbert  
Jerome Gillis  
Harris Gleckman and Riva Krut  
Lauren Glotzer  
Matthew and Lynn Goldfarb  
George and Roberta Gordon  
Gerald and Suzanne Gordon  
Irwin Gratz and Bonny Rodden  
Michael and Thea Greene  
Zelda Greenspun

John Haas, Jr. and Sheryl Haas  
Geoff and Karen Hindall  
Jeffrey and Rebecca Howes  
Helen Isenman and Susan Isenman  
Joseph Manning and Linda Jacobs  
Ronald and Ruth Jacobs  
Michael and Linda Jacobson  
Alvin Jolovitz  
Larry and Wendy Kane  
The Estate of Shirley Kazon  
Tony Paratore and Elaine Kerachsky  
James and Bonnie Klein  
Phyllis Klein  
Ethel Koocher  
Sandrea Kornblum  
Joy Krinsky and David Kemmerer  
Alan and Karen Lerman  
Scott Lerman  
Stephen and Cynthia Lerman  
Lawrence and Joan Levy  
David and Elaine Lewis  
Steven Maier  
Benjamin Marcus and Anita Bernhardt  
Myer Marcus  
Cantor Kurt Messerschmidt

Charlie and Ellie Miller  
David Miller and Veronica Dudar  
Alan Cardinal and Sylvia Most  
Paul and Sarah Muscat  
Samuel and Bette Novick  
Harold and Peggy Osher  
Daniel Pearl and Robin Henry-Pearl  
Michael and Barbara Peisner  
Henni Polak  
Eleanor Potter  
Pat Reef  
Harold Millman and Miriam Remar-Millman  
Geoffrey and Harriet Rice  
Carl and Recia Richman  
Stephen Gleit and Dana Robbins  
Elaine Rosen  
Murray and Shirley Rosen  
Bruce and Ellen Ruben  
Barry and Lori Saltz  
Stephen and Lisa Schiffman  
Edward and Harriet Schultz  
Jeffrey and Tamara Schwartz  
Stephen and Peggy Shapiro  
Andrew and Kimberly Shur  
Fae Silverman

Harvey and Kathleen Silverman  
Andre and Julia Skalina  
Daniel Skwire  
David and Betty Small  
Harriette Small  
Linwood and Judith Small  
Greg and Janine Smestad  
Elizabeth Spector  
Sidney and Susan Steinkeler  
Karen Stray-Gundersen  
Ernest and Diana Sturman  
Denise and Bill Swyers  
Daniel Tarplin and Suzanne Richman  
Paul and Susan Trusiani  
John Riley and Carolyn Turcio-Gilman  
Tara Turcotte  
Douglas and Gail Volk  
Richard and Nadine Weinberg  
Alan Weiner  
Rita Weisberg  
Norman and Judy Wilson  
Elliott Wincele and Olivia Solodar  
Bob Zellan



## TBE ANNUAL APPEAL 5772

Thank you for your generous support of our TBE's Annual Appeal. To date, we have raised over \$34,000 towards our ongoing Annual Appeal goal of \$50,000.

**ICE CREAM & SODA POP SOCIAL**

**Please join us on Sunday, April 1 12:00 - 1:00 pm in the TBE Social Hall for soda pop floats, ice cream sundaes, pizza bagels, sandwiches and more!**

**\$10 / person, \$36 / family.**

**Benefitting TBE's Annual Appeal.**

# DONATIONS TO TEMPLE FUNDS

We are grateful for the following gifts to our Temple Funds. Donations not designated for specific funds will be placed in the General Fund.

Donations to a Temple Fund provide a wonderful opportunity to remember loved ones, honor friends and family and continue to bring strength to our Temple Beth El community. We encourage your donations and welcome your thoughtfulness.

## **Building Fund Contribution**

Charles and Linda Grossman

## **Brotherhood**

David and Beth Strassler, in Memory of Goldie Strassler Sambol

Matt and Lynn Goldfarb, in Memory of Frances and Samuel Goldfarb

Ms. Carla Marcus, in Memory of Douglas Schair

Phil and Elizabeth Levinsky, in Memory of Harry Zaitlin

Phil and Elizabeth Levinsky, in Memory of Jacob Levinsky

Phil and Elizabeth Levinsky, in Memory of Gussy Gottschalk

## **Koocher/Robinov Fund**

Clarke Chandler, in Memory of Jerry Robinov

Ethel Koocher, in Memory of Helen Lewis

Jackie Robinov, in Memory of Esther Bookbinder

Jackie Robinov, in Memory of Ida Robinov

Jackie Robinov, in Memory of Marilyn Bookbinder

## **Rabbi's Discretionary Fund**

Jerry and Phyllis Rosen, in thanks

Stuart and Laura Piltch, in Honor of Rabbi Braun's help and kindness

Charlie Young, in Memory of Jennie Young

Eleanor Ostrovitz, in Memory of Ethel H. Kaplan

Harvey and Kathy Silverman, in Memory of Rebecca Silverman

Harvey and Kathy Silverman, in Memory of Tobie Kaplan

The Estate of Ruth Abramson, in Memory of Ruth Abramson

Helen Levine, in Memory of Jerry Fine

## **Edward Weisberg Fund**

Rita Weisberg, in Honor of the birth of her great nephew Caleb Benjamin Lerman

Helen Isenman and Susan Isenman, in Memory of Dave Astor

Helen Isenman and Susan Isenman, in Memory of Gussy Gottschalk

Helen Isenman and Susan Isenman, in Memory of Shirley Kazon

Joyce Freedlander, in Memory of Donald Freedlander

Joyce Freedlander, in Memory of Ida Shrago

Mark Kiefner and Nancy Bogg, in Memory of Sally Bogg

Rita Weisberg, in Memory of Maurice Levin

Rita Weisberg, in Memory of Jerry Fine

Rita Weisberg and Family, in Memory of Judith Schwey Benjamin

Eddie Richman, in Memory of Jerry Fine

Jeff Richman, in Memory of Jerry Fine

Helen Isenman and Susan Isenman, Speedy Recovery Shirley Levine

## **General Fund**

Erwin and Audrey Muscat

Harold Millman and Miriam Remar-Millman, with gratitude for daughter Joan Levy's speedy recovery

Wayne Eklund and Ginny Squires-Eklund

Abe and Tama Fineberg, in Honor of Stephanie Stern's Birthday

Abe and Tama Fineberg, in Honor of Dick Mack's Birthday

Abe and Tama Fineberg, in Honor of Stuart and Stephanie Stern's 50th Anniversary

Deena Schoenfeld, in Honor of Cantor Messerschmidt's Birthday

Paul and Susan Trusiani, in Honor of the birth of Caleb Benjamin Lerman

Dan and Phyllis Dunitz, in Memory of Jesse Dunitz

Dauna Binder, in Memory of Ardyth Rand Webb

David and Elaine Lewis, in Memory of Bertha "Betty" Silverman

Deborah Migdol, in Memory of Dr. Benjamin Zolov

Irene Mack, in Memory of Philip H. Mack

Irvin Shapell, in Memory of Jacob Shapell

James and Martha Burns, in Memory of Mitchell E. Burns

James and Martha Burns, in Memory of Gail Burns Pelletier

Joel and Diana Gold, in Memory of Beatrice Gold

Karen Stray-Gundersen and Jane Begert, in Memory of Jacob Shapell

Larry Adlerstein, in Memory of Sam Adlerstein

Larry and Janet Koch, in Memory of Sol Koch

Linda Abromson, in Memory of Joel Abromson

Mark and Carol Willis, in Memory of Rita and Lester Willis

Michael Clenott, in Memory of Martin Clenott

Paul and Susan Trusiani, in Memory of Helene Neufeld

Paul and Susan Trusiani, in Memory of Michael Barriault

Peter and Barbara Shaw, in Memory of David Shaw

Peter and Barbara Shaw, in Memory of Doris Shaw

Peter and Barbara Shaw, in Memory of Edward Ginsburg

Peter and Barbara Shaw, in Memory of Roberta Seals

Abe and Tama Fineberg, in Memory of Jerry Fine

Gerald and Selma Cope, in Memory of David Astor

Paul and Susan Trusiani, in Memory of Gussy Gottschalk

Paul and Susan Trusiani, Speedy Recovery Murray Rosen

## **Jonas B Klein Fund**

David Weil, in Memory of Jonas B. Klein

James and Bonnie Klein, in Memory of Jonas B. Klein

Phyllis Klein, in Memory of Jonas B. Klein

## **Kiddush Fund**

Robert and Jean Aranson, in Honor of the Anniversary of his Bar Mitzvah

Benjamin and Jeri Brem, in Memory of George & Adeline Baer Fleischer

Sam and Bette Novick and Rose Novick, in Memory of Jack Novick

## **Kulanu Contribution**

Jerry and Mary Carp, in Honor of Stuart and Stephanie Stern's 50th Anniversary

## **Memorial Park Contribution**

Alvin Jolovitz, in Memory of Barnett Jolovitz

Jerry and Susan Goldberg, in Memory of Harry M. Turitz

Jerry and Susan Goldberg, in Memory of Frances P. Turitz

Pearl Levine, in Memory of Morris Kaufman

Pearl Levine, in Memory of Bertha Malkin

Pearl Levine, in Memory of Samuel Kaufman

## **Music Fund**

Dick and Adele Aronson, in Memory of Betty Silverman

John Riley and Carolyn Turcio-Gilman, in Memory of Thelma Gould

Leah Cohen, in Memory of Miriam Kaatz

Mark and Norma Filler, in Memory of Jack Leveille

Meryl Troop, in Memory of Ruth G. Salzberg

## **Technology Fund**

Susan Lawrence, in Honor of Tom Berman

## **Yad L'Yad**

Bob Zellan

Stephen and Lisa Schiffman

## **Yahrzeit Board Fund**

Dick and Adele Aronson

Irwin Gratz and Bonny Rodden

Nancy Finberg, in Memory of Charlotte Carp

## **Yahrzeit Fund**

Lenny and Merle Nelson, In Loving Memory of Lillian Royte

Arthur and Donna Silverman, in Memory of Benjamin Zolov, M.D.

Barbara Berenson, in Memory of Rose Beckelman

Barbara Berenson, in Memory of David Beckelman

Charlotte Farber, in Memory of Yetta Zimmerman

Charlotte Farber, in Memory of Zella Farber

Charlotte Farber, in Memory of Charles Farber

Deborah Sabarra, in Memory of Charles Kalish

Ed and Harriet Schultz, in Memory of William Baumgarten

Eddie Richman, in Memory of Freda Richman

Ernest and Diana Sturman, in Memory of Madeline Sturman

Esther Chorney, in Memory of Nathan Chorney

Esther Goldberg, in Memory of Ann Morrison

Esther Goldberg, in Memory of Abe Morrison

Harlan Baker, in Memory of Milton H. Baker

Helen Isenman and Susan Isenman, in Memory of John W. Isenman

Helen Isenman and Susan Isenman, in Memory of Sarah Leah Isenman

Helen Isenman and Susan Isenman, in Memory of Morris J. Isenman

Helen Schwartz, Adele, David & Bennett, in Memory of Adam Schwartz

*Donations continued on page 11*

## Donations *continued from page 10*

Honey Goldman, in Memory of Bernard Hecht  
 Irene Mack, in Memory of Philip H. Mack  
 Ivan and Sue Most, in Memory of Alfred Sheinwald  
 Ivan and Sue Most, in Memory of Forrest Sheinwald  
 Joseph and Rhoda Wildstein, in Memory of Theresa Wildstein  
 Leonard and Anne Kovit, in Memory of Dorothy Greenberg  
 Leonard and Anne Kovit, in Memory of Jack Greenberg  
 Mark and Ellen Bramson, in Memory of Fannie Mappen  
 Murray and Shirley Rosen, in Memory of Heschie Binder  
 Natalie Brenner, in Memory of Miriam Goldstein  
 Nora Ciffer, in Memory of Avram Coman  
 Nora Ciffer, in Memory of Ana Coman  
 Patrick and Jackie Maidman, in Memory of Jonathan Lazrus  
 Paul and Susan Trusiani, in Memory of Helene Neufeld  
 Richard and Adele Mack, in Memory of Morris Cohen  
 Robert and Aileen Tabachnick, in Memory of Dr. Henry Tabachnick  
 Ron and Gaye Blumenthal, in Memory of Dorothy Cohen  
 Sam and Bette Novick, in Memory of Jack Novick  
 Sharon Bresler, in Memory of Leonard Joachim  
 Richard and Adele Mack, in Memory of David Astor

**Donations listed were received at Temple Beth El by January 18, 2012.**

## Rabbi *continued from page 1*

often fearful, angry, and exploitative world. When we fully understand the holiness of and in the world, we will 'even the playing field' for those who too often find themselves at the lower end, struggling to survive, and trying not to be exploited. When we see the Divine in the world, we will stop abusing the earth for our own, individual purposes, we will see the bigger picture and we will consider future generations who will inhabit this space after us. And the only way that we are going to be able to make all this happen is by our own hand and in partnership with the Divine. Many of us need religion – study and observance – to help us get to the place where we can transcend the 'idolatry' of money and of power. Religion should help us to rise above the pettiness of our existence and provide meaning to our lives. When we support organizations that help us to delve into deeper meanings; when we perform acts that give voice to the vulnerable, or an act that that is life-sustaining, we are par-

ticipating in *tikkun olam* and its many nuances. I understand how easy it is to look at religion as an expression of the "institution." But I want to challenge you to participate in acts of *tikkun*, whether it is meditating on the meanings of God, whether it is performing acts of justice or random acts of kindness, whether it is celebrating Purim or Pesach or supporting an institution. Let us walk together — you and me and God — as we continue to repair our world.

**Do you have family members or friends who are interested in Temple Beth El?**

**Please have them contact the Temple office at 774-2649 or [office@tbemaine.org](mailto:office@tbemaine.org) to be added to our *Shofar* newsletter email list, or for membership information.**

# MEMBERSHIP BUSINESS DIRECTORY




**Route One, Saco**  
**www.patriotsubaru.com 1-866-284-7900**

## SUPPORT OUR MEMBERS

Need a car, a therapist, or perhaps an attorney or realtor? Temple Beth El members are a great business resource.

For a small \$36 annual donation, you can place your business card in our Member Business Directory so that others may contact you.

Call the TBE Office at 774-2649 for information.



**Barbara Peisner, LCSW**  
 Licensed Clinical Social Worker

96 India Street  
 Portland, ME 04101  
 207.772.2202  
[www.clearwaterpsychotherapy.com](http://www.clearwaterpsychotherapy.com)

Individuals, Couples  
 depression, anxiety, perinatal  
 mental health, bereavement,  
 hypnotherapy

**Place Your Business Card here!**



TEMPLE BETH EL

cordially invites you to our

# PURIM FESTIVITIES

on

**Wednesday, March 7, 2012**

All are welcome!

3:30 pm

**Hebrew School PURIMPALOOZA**

Purim activities, crafts and treats

5:00 pm

**CHILDREN'S MEGILLAH READING**

5:30 pm

**TBE PURIM DINNER**

6:30 pm

**MEGILLAH READING  
IN ANCIENT SHUSHAN**

Bring floor cushions, horns, hand drums and other instruments  
for this festive reading of Megillat Esther!

Come in costume!



TEMPLE BETH EL

# SUSTAINABILITY FAIR



**Sunday, March 11, 2012**

**12:00 noon - 3:00 pm**

**Temple Beth El - 400 Deering Avenue**

*Event is free. All are welcome!*

***Join us for some bright ideas!***

TBE's 1st Annual Sustainability Fair will feature exhibitions, demonstrations, and information on green products and services from local organizations, businesses and individuals, including:

- **Alewive's Brook Farm**
- **EcoMaine Recycling**
- **Efficiency Maine** - Home Energy Savings programs
- **Horizon Maine** - Home energy audits
- **The Sunrise Guide** - The best of what's healthy, local and green in Maine
- **Closest Closet** - Connect with your community to borrow items, recycle, learn new skills, barter, support your local economy, and more.
- **Downeast Doormats** - Handwoven doormats made from recycled lobster trap float-rope
- **Shaklee** - Natural home and personal products to provide a healthier life for everyone, and a better life for anyone

The Fair will kick off the opening bid day of the **TBE Bidding For Good Online Auction**; our goal is to raise funds in support of TBE's commitment to sustainability. The auction website will be up and running at the Sustainability Fair so that you can sign in and place a bid.

# Ten Thousand Miles to Kai-feng

A musical exploration of the cultural exchange  
between Jews and Chinese

with the **Orchid Ensemble**

Jonathan Bernard • Lan Tung • Haiqiong Deng  
(percussion) (erhu) (zheng)

Live in concert with special guests

**THE ORATORIO CHORALE**

Peter Frewen, Director

Wednesday, April 25, 2012  
7:00 pm

at Temple Beth El  
400 Deering Avenue, Portland

Event is free. All are welcome.

Underwritten by the Sam Cohen Fund



萬里開封路

蘭韻中樂團

董籃 — 二胡  
鄧海瓊 — 古箏  
伯納德 — 打擊樂

嘉賓  
包瑞絲希航 — 打擊樂  
布來勃門 — 單簧管、薩克斯風

PHOTO: NENAD STEVANOVIC  
POSTER: LAN TUNG



[www.orchidensemble.com](http://www.orchidensemble.com)





TEMPLE BETH EL

400 Deering Avenue  
Portland, ME 04103

ADDRESS SERVICE REQUESTED

**PORTLAND CHEVRA KADISHA**



*In time of need,  
one Jew caring  
for another*

**JEWISH FUNERAL HOME**

PreArrangement Counseling

471 Deering Avenue  
Portland, ME 04103

207•774•3733

[portlandjewishfuneralhome.org](http://portlandjewishfuneralhome.org)

**WE THANK OUR SUPPORTERS**

**Carolyn Turcio-Gilman  
& John Riley**

Your donation of only \$18 per year includes a one-line listing with your name in this column that honors our supporters of the *Shofar*. Contact the TBE office or donate on the TBE website by selecting "Shofar Newsletter" from the list of funds.



**Shofar Deadlines** – May – June 2012 issue is March 15.

Please submit material via e-mail as text included in the body of the message or as an attached Microsoft Word document to [office@tbmaine.org](mailto:office@tbmaine.org). Submissions on paper will also be accepted.